

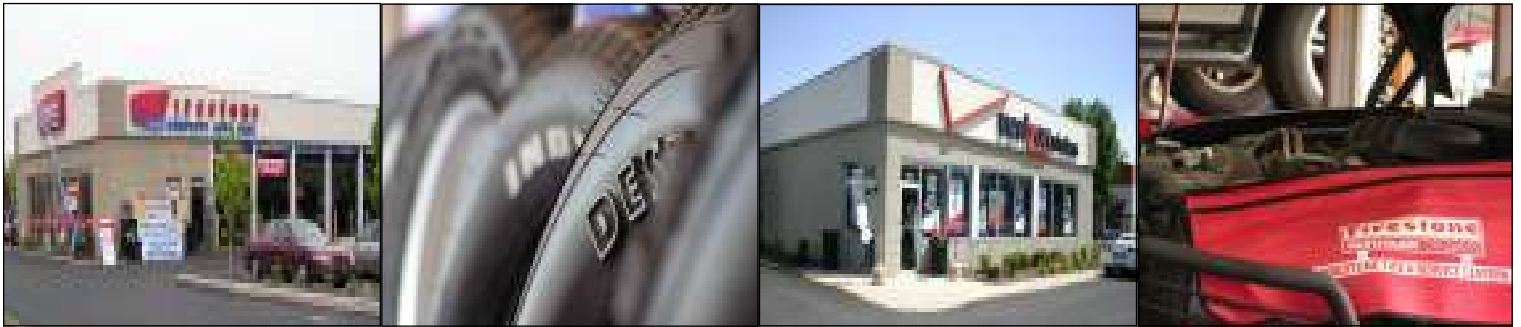
CONTACT: JIM MINICK
 Office: (630) 985-8959
 jminick@ardminproperties.com
 www.ardminproperties.com



7501 S. Lemont Rd. Suite 300
 Woodridge, IL 60517
 (630) 985-8959 Office
 (630) 985-8756 FAX



www.OrlandAutoMall.com



2006 Demographics

	<u>1 Mile Radius</u>	<u>3 Mile Radius</u>	<u>5 Mile Radius</u>
Population	11,210	79,516	102,650
Total Households	4,098	26,407	33,500
Average HH Income	\$84,355	\$93,416	\$96,940

This is an estimate developed by the CCMI Institute.

- High Traffic flow (38,000 Vehicles Per Day)
- Conveniently located on 159th St.
- A quarter of a mile from LaGrange Rd.
- Across the Street from Wal-Mart and Circuit City.



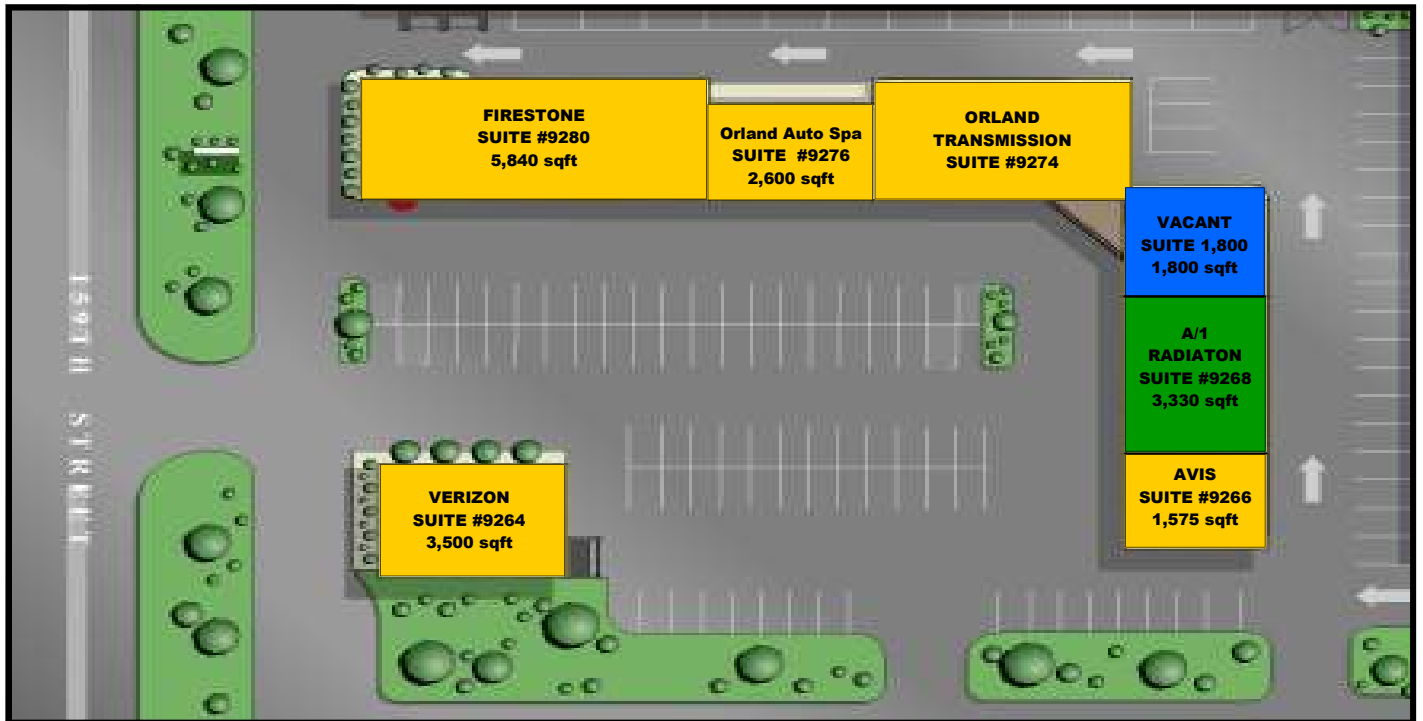
CONTACT: JIM MINICK
 Office: (630) 985-8959
 jminick@ardminproperties.com
 www.ardminproperties.com




7501 S. Lemont Rd. Suite 300
 Woodridge, IL 60517
 (630) 985-8959 Office
 (630) 985-8756 FAX



www.OrlandAutoMall.com



Key:
Blue: Vacant
Red: Lease Out
Yellow: Occupied
Green: Available

Unit	Tenant	Dimensions
9280		49X116
9276	Orland Auto Spa	39X47
9274		49X81
9270	VACANT	45.00X
9268		45.00X150
9266		45.00X
9264		50X70